

CENTRE D'ARCHÉOLOGIE MÉDITERRANÉENNE
DE L'ACADÉMIE POLONAISE DES SCIENCES

ÉTUDES et TRAVAUX
XIX
2001

JOLANTA MŁYNARCZYK

*Local and Regional Wares
at Tell Keisan
in the Hellenistic Period*

This paper presents some observations on the pottery of the Hellenistic period found at Tell Keisan, a site in the plain of Akko in northern Israel. Situated *c.* 9 km to the east of Akko-Ptolemais, on an ancient road connecting this important city with Galilee, Tell Keisan was investigated by the mission of the Ecole Biblique et Archéologique Française, Jerusalem, in 1971–76 (published in 1980)¹ and in 1979–80 (unpublished). At the request of Jean-Baptiste Humbert O.P., the director of the publication project, I undertook a study of the Persian-period and Hellenistic tableware found during these last two seasons, while re-considering the material already published in Keisan I. Financial support for my research was provided by the A.W. Mellon Fellowship at the Albright Institute, Jerusalem, the assistance of which is gratefully acknowledged.²

The French excavations have revealed 13 levels comprised in a chronological horizon from the 12th century B.C. and the 7th century A.D., with a lengthy gap in the occupation between the Late Hellenistic and Byzantine periods. The earlier part of the Hellenistic period is recorded only by rather meagre, ill-defined architectural remains and some pottery deposits. The latter, accumulated in a number of shallow pits (*fosses hellénistiques*), were dated on internal evidence to between the turn of the 4th century and the mid-2nd century B.C. (that is, spanning a considerable period of time), with the addition of a few residual sherds from the Persian period (5th–4th centuries B.C.). The richest deposit, and probably the one with the earliest starting date, is the *Fosse 2001* designated in our pottery study as Deposit A. This, as other pottery groups (Deposits B–K), included both imported wares and local/regional products; the latter are the subject of our present discussion.³

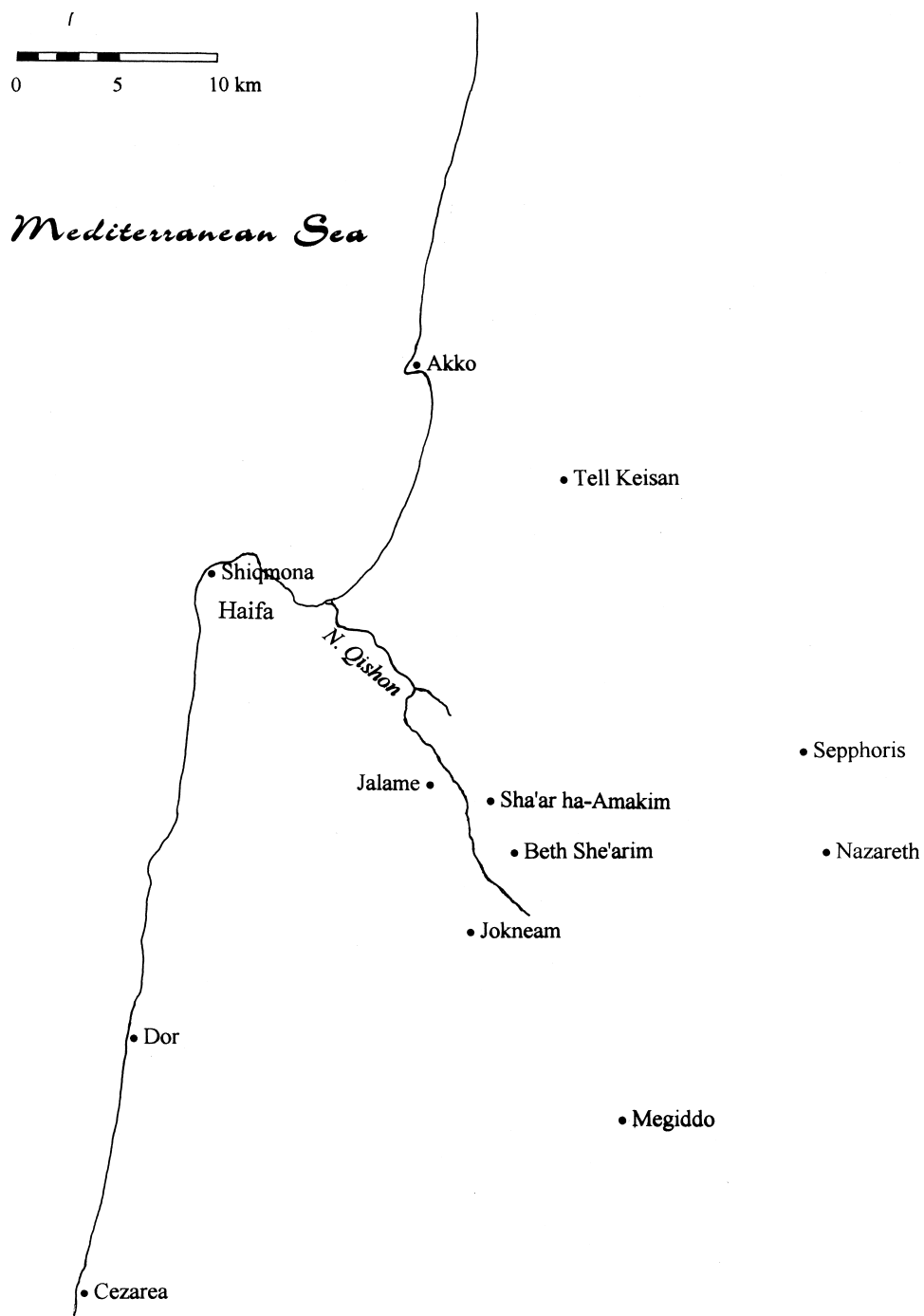
To evaluate the local pottery production of the Hellenistic period, the earlier, Persian-period finds had to be examined first, allowing what could be regional pottery to be distinguished with relative ease from several distinctive classes of imports. The latter included the so-called Ionian cups (brought to the region from Rhodes, Samos and Miletos?), the “banded bowls” (perhaps from the Knidos/Kos area), and the Attic wares which appeared at Keisan about the last quarter of the 6th century B.C. and quickly prevailed among the imported tableware.⁴ Next, the characteristics of the Persian-period regional wares (both decorated and plain), in terms of the fabric and surface treatment, were traced to the Hellenistic period material, and provided a basis for distinguishing of a group of Hellenistic commonware pottery that apparently was not imported. The final step was to recognize, on the same criterion of the fabric, a local/regional class of the Colour-Coated Ware as distinct from its foreign counterparts.

¹ Tell Keisan 1971–1976. Une cité phénicienne en Galilée, eds. J. BRIEND, J-B. HUMBERT, Fribourg 1980 [= Keisan I].

² See J. MŁYNARCZYK, Fine Wares at Tell Keisan during the Persian and Hellenistic Periods. The Pattern of Importations, *ASOR Newsletter* 50:3 (Fall 2000) [= Fine Wares at Tell Keisan], pp. 17–18.

³ On the imported Hellenistic wares, see J. MŁYNARCZYK, Hellenistic fine wares at Tell Keisan: a pattern of importations, paper submitted to the acts of the colloquium *Céramiques hellénistiques et romaines*, Lyon, Maison de l’Orient Méditerranéenne 2–4.03.2000 (in print).

⁴ Sources of imports in the Persian period were tentatively identified by MŁYNARCZYK, Fine Wares at Tell Keisan (see note 2 above); for published examples, see E. Nodet, in: Keisan I, pp. 126–127, Pl. 22 (Ionian cups: Nos. 1–2 and 4–5, “banded bowl”: No. 6, and samples of Attic ware).



1. Map showing the situation of Tell Keisan.

The presumably local wares, both plain and colour-coated, were sorted into several groups on macroscopic appearance (that is, deliberately following regular field conditions of the pottery reading) of the clay fabrics, some of which were further subdivided according to the surface treatment. Comparisons were made with pottery fabrics occurring in unpublished Persian-to-Hellenistic period assemblages from coastal sites in the neighbourhood of Tell Keisan: Akko and Tell Abu Hawam,⁵ as well as with published contemporaneous finds from Shiqmona (at the southern end of the Akko bay), its Hellenistic settlement destroyed c. 130 B.C.⁶ Moreover, the presence of most wares found in the above-mentioned places was observed also in the Hellenistic material at Sha'ar ha-Amakim, a site situated close to the passage from the plain of Akko to Jezreel valley.⁷ Last but not least, a recently published study of the commonware pottery from Tel Anafa has significantly contributed to our research, since two of several wares distinguished there by A. Berlin, specifically the so-called Phoenician White Ware and Phoenician Semi-Fine Ware,⁸ occur at Tell Keisan, too.

In the presentation that follows, I have chosen to discuss the pottery (regarded by me as local or regional) in the order of individual wares, listing the vessel forms attested in each ware at Tell Keisan. However, I have not attempted to establish a chronological sequence of the forms in view of the lack of any stratigraphical features in the *fosses hellénistiques*. The discussion is illustrated by objects excavated in 1979-1980 (here published for the first time), but also by those already published; in the latter case, the references to Keisan I are given in Appendix 1.

1. "LIGHT WHITE WARE"

The fabric is light and porous (owing to the presence of voids, which give it a spongy look and indicate the use of organic temper), pinkish white or yellowish white (corresponding to Munsell 10 YR 8/2, 10 YR 8/3, or 2.5 Y 8/2); surface just a hue lighter, near 2.5 Y 8/2 or 10 YR 8/2, rather gritty feel, in table vessels wet-smoothed. Possible inclu-

⁵ Examination of this pottery was kindly made possible to me by Prof. Michal Artzy and Dr Fanny Vitto, Dr Jacqueline Balensi and Dr Gerald Finkielsztejn respectively. On the Persian-to-Hellenistic pottery from Akko, see also M. DOTHAN, Akko, Interim Excavation Report, First Season, 1973/4, *BASOR* 224, 1976 [= Akko], pp. 1-48; R. LIEBERMAN-WANDER *et al.*, Graves of the Hellenistic Period on the Akko Seashore (Hebrew), *Atiqot* XXXVII, 1999 [= Graves], pp. 169-173, and D. REGEV, Akko Ptolemais. The Phoenician Hellenistic Pottery, *E' Epistemonike Synantese gia ten Hellenistike Keramike*, Athena 2000 [= Akko], pp. 221-224.

⁶ Cf. J. ELGAVISH, Pottery from the Hellenistic Stratum at Shiqmona, *IsrExplJ* 26, 1976 [= Shiqmona, 1976], p. 67.

⁷ J. MŁYNARCZYK, Pottery from the Hellenistic Cistern at Sha'ar ha-Amakim (Lower Galilee, Israel), in: *E' Epistemonike Synantese gia ten Ellhnistike keramike*, Chania 6-13 IV 1997, Athena 2000 [= Sha'ar ha-Amakim], pp. 225-235; to the bibliography of the site's history, quoted in note 3, one should add J. MŁYNARCZYK, Sha'ar ha-Amakim: a Hellenistic and Roman site in Lower Galilee, Centenary of Mediterranean Archaeology at the Jagiellonian University 1897-1997, Kraków 1999, ed. J. ŚLIWA, pp. 93-104.

⁸ A. BERLIN, The Plain Wares, in: Tel Anafa II, 1, ed. Sh.C. HERBERT, Ann Arbor 1997 [= Anafa], pp. 1-11.

sions comprise occasional lumps of lime, and flat grits: black, reddish/orange, brown. This ware should perhaps be regarded as a version of “Phoenician White Ware” recognized at Tel Anafa; the latter is, however, very dense, and no black or red/brown grits have been reported.⁹ A limited range of shapes in this ware were found at Anafa, all of them dated to the Persian period.

Our Light White Ware is comparatively rare at Sha’ar ha-Amakim, where it is attested mainly (if not exclusively) by fragments of storage vessels. On the contrary, at Tell Keisan it includes both utility vessels and table pottery. This fact suggests that the source for this ware was not far from Tell Keisan, probably in the coastal area comprised between the Cap Karmel (Shiqmona) and Akko to Nahariya, since table and “personal” vessels in this ware occurred also at Tell Abu Hawam and Shiqmona.¹⁰

Fragments of utility vessels (the vessels intended for storing, preparing and serving food) can be identified as pertaining to jars, jugs, kraters and basins. Some rims belong to the well-known type of bag-shaped jar with everted rim (see **1**, **2**) which originated in the Persian period when it prevailed in the north;¹¹ at Tel Michal (north of Jaffa) it occurs as early as 525–490 B.C., culminates in Stratum VIII (dated to 430–400 B.C.) and continues into Stratum VI (dated to 350–300 B.C.).¹² In the Hellenistic period this type’s occurrence extends from Tell el-Ful in Judea (2nd century B.C.) to Tel Anafa in the Hula valley (present there by c. 125 B.C.), and is well-attested at Sha’ar ha-Amakim where several such jars come from a sealed deposit antedating 150 B.C.¹³ Less common types of rims in Light White Ware at Tell Keisan pertain to a big necked jar (amphora) **3**¹⁴ and a storage jug **4**¹⁵. Rim **5** could belong either to another jug, or to a jar.¹⁶ Rims of two different krater types are represented by **6** and **7**. The type illustrated by **6** occurred in the Jezreel Valley already in the Iron Age II¹⁷ and continued in several variations throughout the Persian period,¹⁸

⁹ BERLIN, Anafa, *loc. cit.*, described this ware as dirty grayish or greenish white, thick-walled, usually incompletely fired; hard, dense, with many fine and small gray and white inclusions visible by eye.

¹⁰ For Tell Abu Hawam, see fish plate which is a copy of the Attic fish plate: G. FINKIELSZTEJN, *Les niveaux I et II de Tell Abou Hawam. Les périodes perse et hellénistique*, Jérusalem 1987 (unpublished ms), Pl. I:16; for Shiqmona, see comments on fabrics by ELGAVISH, Shiqmona, 1976, pp. 71, 73.

¹¹ E. STERN, *Material Culture of the Land of the Bible in the Persian Period, 538–332 B.C.*, Warminster 1982 [= *Material Culture*], pp. 104–105, types F1–F2.

¹² L. SINGER-AVITZ, *Local Pottery of the Persian Period (Strata XI–VI)*, in: *Excavations at Tel Michal, Israel*, eds. Z. HERZOG *et al.*, Minneapolis and Tel Aviv 1989, [= *Tel Michal*], pp. 115–117, Fig. 9.1:11, Fig. 9.3:1–5, Fig. 9.4 and 9.5:1–6, Fig. 9.6 and 9.7:10; Fig. 9.13:17.

¹³ N.L. LAPP, *The Pottery from the 1964 Campaign*, in: *The Third Campaign at Tell el Fûl: the Excavations of 1964*, ed. N.L. LAPP, *AASOR* 45, 1981 [= *Tell el Fûl*], p. 271, Fig. 73; BERLIN, Anafa, p. 156, Pl. 58; MLYNARCZYK, Sha’ar ha-Amakim, pp. 226–228, notes 8–12, Pl. 115.

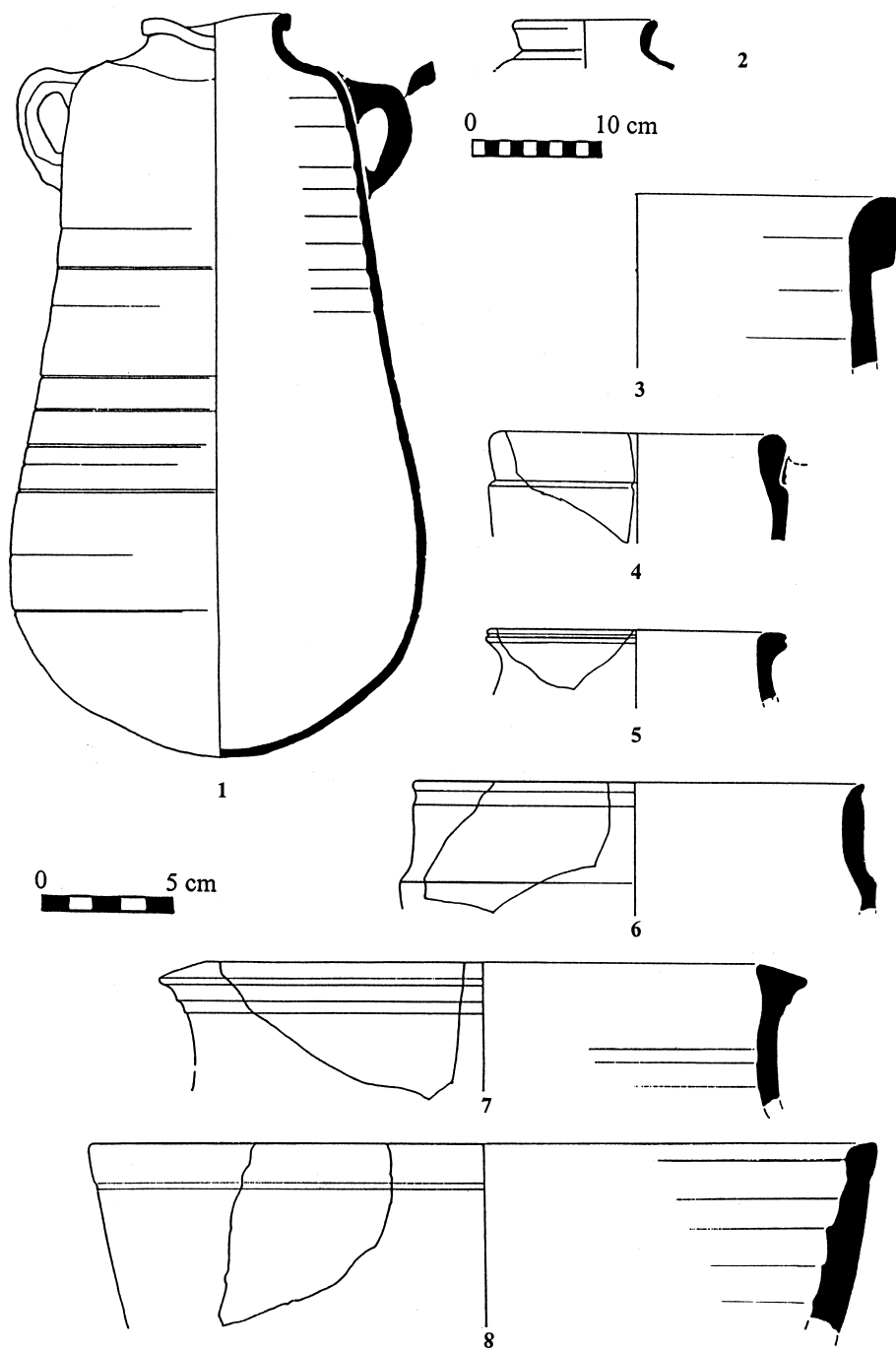
¹⁴ For a similar form, see SINGER-AVITZ, *Tel Michal*, Fig. 9.3:11 from Stratum IX assigned to 450–430 B.C.

¹⁵ A similar fragment, apparently in the same ware as ours, dated to the turn of the 5th century B.C., comes from Tell Qiri in the Jezreel Valley: A. BEN-TOR, Y. PORTUGALI *et al.*, *Tell Qiri. A Village in the Jezreel Valley*, Jerusalem 1987 [= *Tell Qiri*], Fig. 5:12.

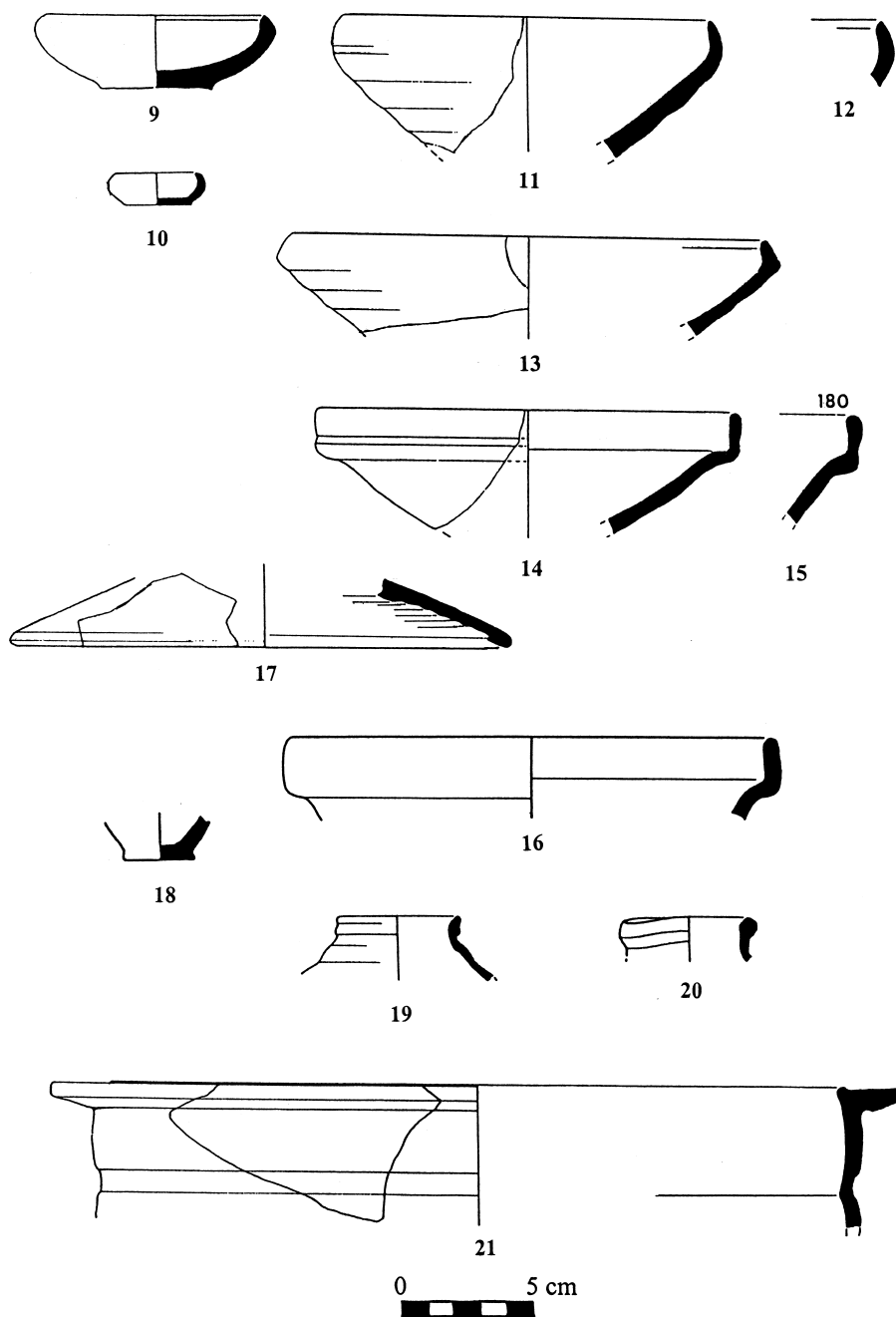
¹⁶ Such as from Tell Qiri: BEN-TOR, PORTUGALI, *Tell Qiri*, Fig. 4:6, of the 5th–4th century B.C.

¹⁷ Cf. BEN-TOR, PORTUGALI, *Tell Qiri*, Fig. 10:15.

¹⁸ STERN, *Material Culture*, pp. 98–99, hole-mouth kraters: type C1.



2. Light White Ware (Nos. 1–8).



3. Light White Ware (Nos. 9–18), Hard Orange Ware (Nos. 19–21).

while No. 7 is related to Semi-Fine Painted Column Krater from Tel Anafa, dated to 250–125 B.C., with parallels quoted from Marissa, Samaria, Tarsus and Paphos.¹⁹ The type of a deep basin (8) is known from Tel Michal Stratum VIII, assigned to 430–400 B.C.²⁰

The category of table vessels is represented practically exclusively by open forms. Among several variants of the “echinus bowl” (bowl with incurved rim), there is a small and shallow vessel 9 standing on a string-cut base; it is paralleled by a bowl from Akko, more thin-walled and apparently of a different fabric,²¹ and a miniature version of this form (10), still more shallow, its fabric rather untypically containing many white grits. Two more variants of echinus bowls, their bases not preserved, are: deep bowl with undulating walls (11 and probably 12) and a bowl with beveled rim (13). All these echinus bowls apparently represent different variants of a local type of bowl known in Palestine during the Persian period, presumably developed under Cypriote influence in coastal areas.²² A specific form of bowl with a folded rim, paralleled by a bowl from the Persian-period stratum at Shiqmona,²³ could be a plain ware copy of imported Black Gloss form F 109, *en vogue* from the second half of 5th and first quarter of 4th century B.C.²⁴ All examples of such bowls in Light White Ware at Tell Keisan come from Deposit A which indeed contains some 4th century B.C. material (14–16). The form of a saucer with infolded rim (17), which could also serve as a lid, has parallels at Tell Keisan, in the Colour-Coated ware of a Cypriote origin, to judge by the fabrics, and at Tell Dor.²⁵ Finally, the only closed form in the Light White Ware is represented by a base (18) of what could be a juglet comparable to 25 discussed below.

¹⁹ BERLIN, Anafa, PW 403, p. 136, Pl. 43.

²⁰ SINGER-AVITZ, Tel Michal, Fig. 9.7:8.

²¹ DOTHAN, Akko, pp. 28–29, Fig. 27:1, from a 5th century B.C. stratum; another parallel is a miniature bowl from Tel Michal attributed to the end of the Persian period: SINGER-AVITZ, Tel Michal, Fig. 9.13:8. The closest analogy, however, is a larger bowl from Kition in Cyprus: J.-F. SALLES, *Les égouts de la ville classique. Kition-Bamboula II*, Paris 1983 [= KB II], Fig. 27, No. 225.

²² STERN, *Material Culture*, pp. 94–96, types A1 and B1, which show two different sizes; examples from Nahariya: R. OVADIAH, *Findings from the O. Yosef Excavations at Tel Nahariya, Atiqot XXII*, 1993, [= Nahariya], p. 23*, Fig. 2:1, 3. See bowls in Plain White VI from Kition: SALLES, KB II, Nos. 191–193, pp. 65–66, Fig. 25. Profile of our Nr 12 recalls a Persian-period bowl (decorated with red slip) from the Akko area: A. ROCHMAN-HALPERIN, “Excavations” at Giv’at Yasaf (Tell er-Ras) – 1984–1985, *Atiqot XXXVII*, [Tell er-Raz] 1999, p. 102, Fig. 17:4.

²³ J. ELGAVISH, *Archaeological Excavations at Shiqmona. Field Report No. 1, The Levels of the Persian Period, Seasons 1963–1965* (Hebrew), Haifa 1968 [= Shiqmona, 1968], Pl. LVI:127, in a different ware (“Phoenician Semi-Fine”?); A related vessel shape from Nahariya is smaller and less carinated: OVADIAH, Nahariya, p. 23*, Fig. 2:10.

²⁴ According to the classification of pottery from Salamis: L. JEHASSE, *La céramique [a] vernis noir du rempart méridional, Salamine de Chypre VIII*, Paris 1980; for the occurrence of this Black Gloss form in Akko, see DOTHAN, Akko, pp. 28–29, Fig. 27:5.

²⁵ Cf. Keisan I, Pl. 13:25–25a; B. GUZ-ZILBERSTEIN, *The Typology of the Hellenistic Coarse Ware and Selected Loci of the Hellenistic and Roman Periods in: E. STERN et al., Excavations at Dor, Final report IB*, Jerusalem 1985 [= Dor], pp. 350–351, Fig. 6.4:2, dated to between 275 and 125 B.C.

2. "HARD ORANGE WARE"

The fabric is rather fine but granular in texture, usually dark orange in colour (near 7.5 YR 6/4, 7.5 YR 7/4 and 7/6, 5 YR 7/6) with some grey and dark red or brown inclusions (sometimes also black "dust"), and occasional white ones. The surface, of a gritty feel, is fired pink or yellowish pink (7.5 YR 7/4, 5 YR 8/4). Occasionally, the fabric is pale-coloured, nearly white, but it is more dense than the standard Light White Ware is. Also inclusions, even if their range resembles that in the Light White Ware, look differently (finer, more evenly distributed?). A wide range of shapes (storage and serving vessels as well as table and personal vessels) attested at Tell Keisan suggest that the products in the Hard Orange Ware were fairly easily available to the local inhabitants. As this ware, however, is definitely more common at Sha'ar ha-Amakim than at Tell Keisan, its source should perhaps be sought in the inland parts of the Akko plain.²⁶

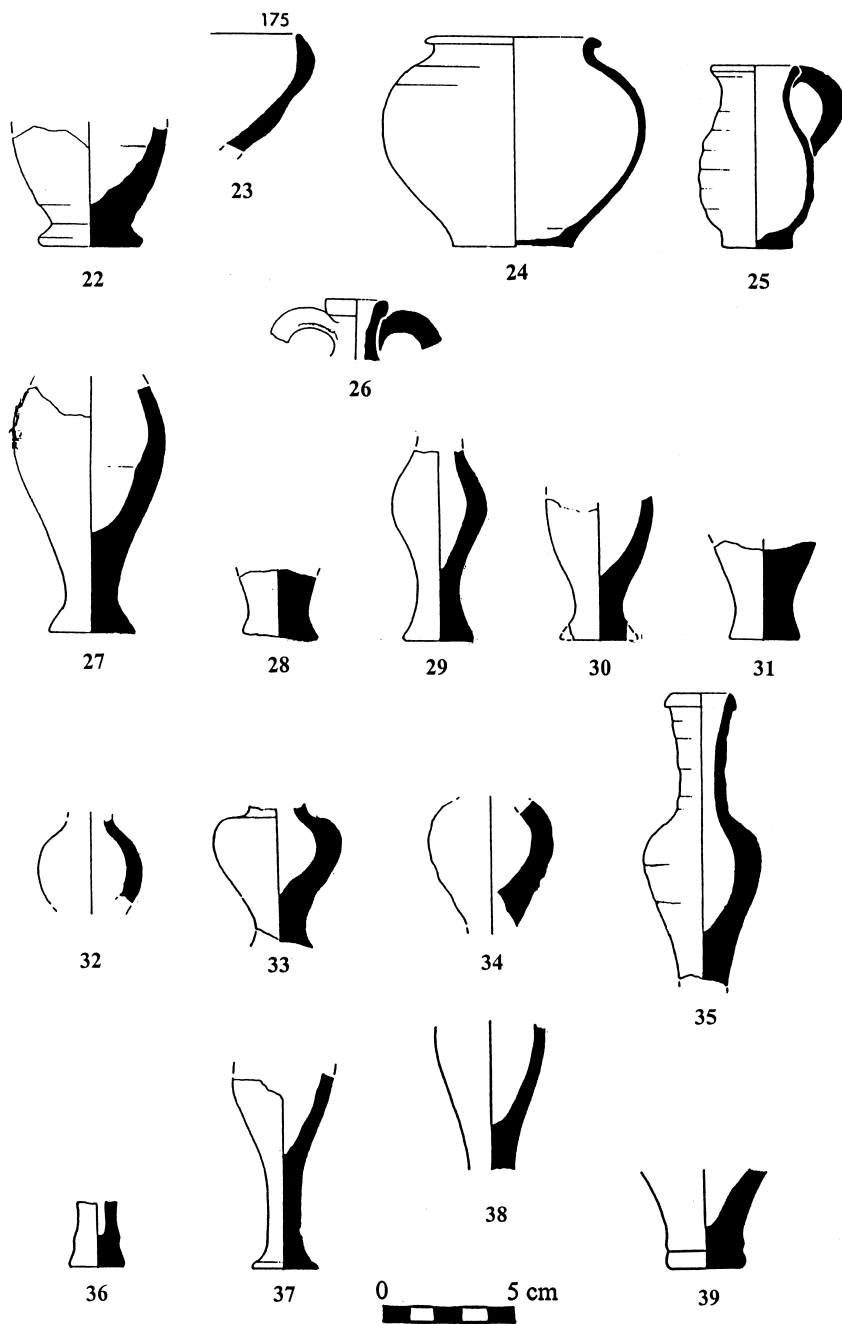
At Keisan, storage jars in the Hard Orange Ware, with rim profiles **19** and **20** (the latter paralleled by rim no. 3.159 from Deposit A, not illustrated) pertain to the same bag-shaped form as nos. **1** and **2** (see above). The category of serving vessels is represented by rim and neck of krater (**21**); a close parallel for its shape and ware was found at Sha'ar ha-Amakim in a context antedating 150 B.C.²⁷ The form, presumably equipped with vertical handles, is further paralleled by different wares at Tel Dor and Tel Anafa during 275–125 B.C., and probably related to the Cypro-Classical kraters from Kition.²⁸ A body fragment of lekythos with extended disc base (**22**) resembles the Early Hellenistic "Stumpy Foot Table Juglet" in the Phoenician White Ware from Tel Anafa; other sites of occurrence of this form include Tell Abu Hawam and Shiqmona.²⁹ Finally, a drinking bowl, featuring a deep body with incurved rim and undulating wall (**23**) represents the same form as **11** in the Light White Ware. The fabric of **23** has a "sandwich" break, respectively beige and brown (10 YR 7/3 and 6/3), with some very fine grey and brown grits, and scarce unevenly distributed rounded chalk? grits; the surface is nearly white (10 YR 8/2).

²⁶ It seems to have occurred also among the Shiqmona finds: ELGAVISH, Shiqmona, 1976, p. 71.

²⁷ MLYNARCZYK, Sha'ar ha-Amakim, p. 230, Pl. 118:1.

²⁸ GUZ-ZILBERSTEIN, Dor, Fig. 6.14:10, in plain (local?) ware; BERLIN, Anafa, pp. 136–137, Pl. 43, PW 403, in Semi Fine Ware with painted decoration; PW 408 from Tel Anafa, made in the local Spatter Ware, apparently represents a later development of the same form. At Kition: SALLES, KB II, pp. 78–80, No. 262 in Plain White ware.

²⁹ BERLIN, Anafa, PW 51, pp. 51–52 (with references), Pl. 9. Alternatively, one can regard our No. **22** as a large example of Tel Anafa's "Short Rolled Rim Unguentarium" (300–250 B.C.): *ibid.*, p. 63, PW 83, Pl. 12; see also profile of an unguentarium from Dor: GUZ-ZILBERSTEIN, Dor, Fig. 6.27:11 (attributed to c. 200 B.C.).



4. Hard Orange Ware (Nos. 22–23), standard Phoenician Semi-Fine Ware (Nos. 24–39).

3. "SEMI-FINE WARE"

PHOENICIAN SEMI-FINE WARE (STANDARD)

This ware was first named by A. Berlin who described it at Tel Anafa as being fairly soft, well-levigated, dense, fired pale buff to pink, of chalky texture.³⁰ The research on its distribution as well as the scientific analyses lead to its source being identified in the neighbourhood of Tyre; an alternative proposition (based on similar analyses) prefers the region of Sarepta.³¹ In her discussion, A. Berlin quotes examples of the Semi-Fine Ware she has recognized among the material from Tell Keisan,³² the majority of which are discussed in the present paper (Nos. **24**, **25**, **27–31**, **33–35**, **37**, **47**, **55**, **57**, **59**). Following these references, I was able to provide my own macroscopic description of the Phoenician Semi-Fine (standard) ware *de visu*. Its fabric colours can be specified as pink or light red (5 YR 7/4 and 7/6), pinkish orange (5 YR 6/6), pinkish brown (5 YR 6/4) or brownish orange (7.5 YR 6/6). The texture is dense, but often slightly granular in appearance, containing some red inclusions (up to large ones) as well as occasional fine nearly-black and/or grey, and white ones; a "sandwich" baking (interior grey, exterior pink) may occur where the wall is thick. The surface is normally fired pink (5 YR 7/4 or 7.5 YR 7/4) turning yellow (occasionally yellowish white); a distinctive feature is its smooth "powdery" feel.

A range of shapes, all of which are the closed ones and fall into the category of personal vessels, occur in this ware at Tell Keisan. A handleless ointment(?) pot (**24**), fired beige-white (10 YR 8/3) at the surface, with yellow and pink spots, has a parallel from the Persian-period stratum at Shiqmona; one should also note its resemblance to a "krater" from Tell en-Nasbeh.³³ A complete juglet standing on string-cut base (**25**) represents a fairly common type developed in the coastal plain during the 5th–4th centuries B.C., with the examples found at Tell Abu Hawam and Shiqmona, Akko and Nahariya (but also at Hazor)³⁴; it continued to be used in the Hellenistic period, as attested at Shiqmona, Akko, Dor and Tel Anafa³⁵; see also no. **18** above, an example of the Light White Ware. The two-handled fragmentary vessel **26** could be either a small flask of the type recorded at Tell el-Ful

³⁰ BERLIN, Anafa, pp. 9–10, its thin-section reveal dense, finegrained clay matrix with minimal sand temper and just few small voids.

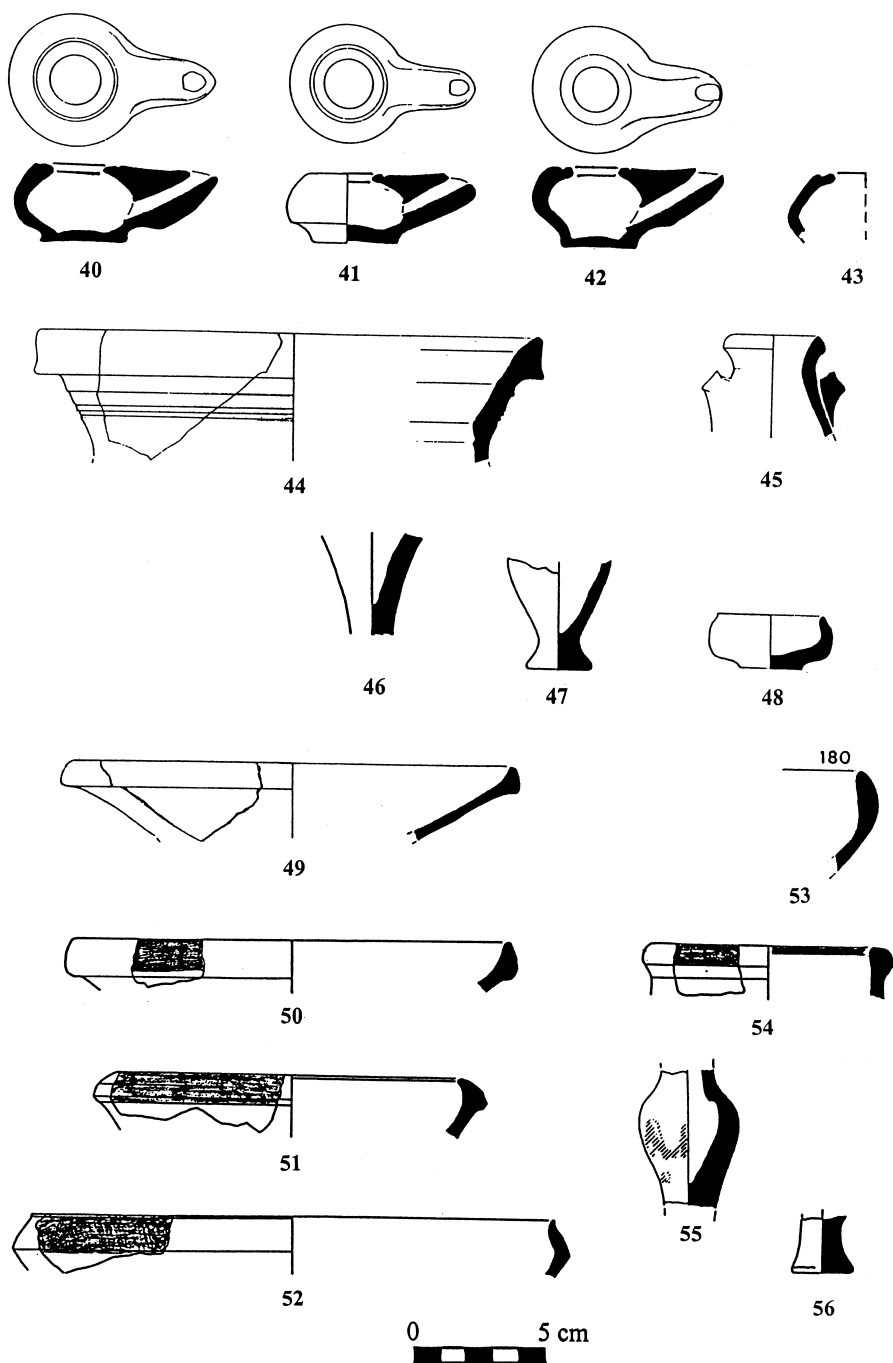
³¹ W.J. BENNETT JR., J. BLAKELY, *Tell el-Hesis. the Persian Period (Stratum V)*, Winona Lake 1989, pp. 207–210, Fig. 171, with an excellent description of the fabric of "Lebanese Transport Jar".

³² BERLIN, Anafa, pp. 9–10 and note 30, stating that their fabric "was confirmed by visual inspection": Keisan I, table jugs Pl. 9:12–12a, lids Pl. 11:10–10a, small closed forms Pl. 14: 16–21 and 27–28. For the occurrence of Semi-Fine ware at Shiqmona, see ELGAVISH, Shiqmona, 1976, pp. 71, 73.

³³ ELGAVISH, Shiqmona, 1968, Pl. XXXII:3; Nasbeh: see STERN, *Material Culture*, p. 99, Fig. 123, type D.1.

³⁴ STERN, *Material Culture*, pp. 123–124, "cup type 1"; other parallels come from Nahariya (OVADIAH, Nahariya, p. 24*, Fig. 3:15) and from nearby Lohamei HaGeta'ot (M. PELEG, *Persian, Hellenistic and Roman Burials at Lohamei HaGeta'ot, Atiqot XX*, 1991 [= Lohamei HaGeta'ot], p. 133, Fig. 4:1).

³⁵ ELGAVISH, Shiqmona, 1976, Fig. 4:10–11; REGEV, Akko, Pl. 114:e; GUZ-ZILBERSTEIN, Dor, Fig. 6.28: 9–12, partly coated with red slip, at least one of them from a 200–125 B.C. layer; BERLIN, Anafa: "Semi Fine Wide Mouth Table Juglet" PW 53–58, Pl. 10, assigned to 250–125 B.C.



5. Semi-Fine variant a (Nos. 40–43), Semi-Fine variant b (Nos. 49–56).

(north of Jerusalem) and attributed to the 2nd century B.C., or an Early Hellenistic amphoriskos as the one found at Tel Michal.³⁶

Fragmentary unguentaria in the Phoenician Semi-Fine Ware fall into no less than three variants of shape. The most numerous group are unguentaria with oval-to-biconical body standing on a rather short stem with flaring foot (27–32: all examples except 27 come from Deposit A, and only 32 has faint traces of pale red band painted on the shoulder).³⁷ Another shape variant can be described as “shouldered”, its body tapering from pronounced shoulder to a short stem (33 and 34). Finally, the third variant features a spindle-shaped body with a tall stem (35–38). At Tel Anafa, comparable material is found mainly under the “Semi Fine Pared Fusiform Unguentarium” (corresponding to our 27–32 – and to 55–58 discussed below), which first appears there c. 110–100 B.C., and “Elongated Fusiform Unguentarium” (corresponding to 35–38, 46, and 59–60 below), present there by 125 B.C.. However, this chronology, especially regarding the former group, cannot be accepted for the Akko region, as proven by the parallels from Sha’ar ha-Amakim definitely antedating 150 B.C.³⁸ Finally, our No. 33 is referred to by A. Berlin as an example of the “Short Shouldered Unguentarium” attested at Tel Anafa about 300–250 B.C.³⁹

Base and lower part of body 39 could belong to another, early variant of unguentarium, paralleled both at Dor (350–275 B.C.) and Tel Anafa (300–250 B.C.).⁴⁰ Alternatively, this could be an amphoriskos, present at many Levantine sites including the Akko region (Shiqmona, Akko, Lohamei HaGeta’ot), Umm el-Amed and Tel Anafa, our fragment specifically close to the Dor examples of c. 200–125 B.C.⁴¹ Several wheel-made lamps in the Phoenician Semi-Fine Ware all belong to one type with a globular body on flat string-cut base and with flat-topped, round-tipped nozzle. The objects published in Keisan (our 40–42), as well as fragment 43 (a pale-bodied version, 10 YR 7/3, with white surface, 10 YR 8/2) and fragment reg. no. 3.884 (not illustrated), all come from Deposit A. Nozzles of six more similar lamps in the same ware were found in other sectors of the site. This type, a local imitation of Attic imports of the 4th to 3rd century B.C. (Howland type 25A), was very common in the 3rd and earlier 2nd century B.C., especially in the coastal regions.⁴²

³⁶ LAPP, *Tell el Fûl*, p. 283, Fig. 76:8–9, from Tell el-Fûl; SINGER-AVITZ, *Tel Michal*, pp. 134–135, Fig. 9.12:2, dated by coins of Alexander the Great.

³⁷ Another example of this group is reg. No. 3.519, Keisan I, Pl.14:23, erroneously drawn, since actually it is like Keisan I, Pl. 14:21, our No. 47.

³⁸ BERLIN, *Anafa*, pp. 58–66, PW 94–98 and PW 99–106 respectively, Pls. 13–14; MLYNARCZYK, *Sha’ar ha-Amakim*, Pl. 120.a: 4–5.

³⁹ BERLIN, *Anafa*, p. 62.

⁴⁰ GUZ-ZILBERSTEIN, *Dor*, pp. 374–375, Fig. 6.26: 7–8; BERLIN, *Anafa*, p. 63, PW 83, Pl. 12 (Short Rolled Rim Unguentarium).

⁴¹ GUZ-ZILBERSTEIN, *Dor*, p. 378, Fig. 6.29: 2–6; BERLIN, *Anafa*, pp. 56–57, PW 74–75, Pl. 11 (Semi-Fine Tapered Amphoriskos); to parallels gathered by Berlin add: PELEG, *Lohamei HaGeta’ot*, p. 133, Fig. 4: 2; R. OVADIAH, *A Burial Cave of the Hellenistic and Early Roman periods at Hagosherim, Atiqot XXXVIII*, 1999 [= Hagosherim], p. 35*, Fig. 1 (a site north of Tel Anafa), and ROCHMAN-HALPERIN, *Tell er-Ras*, p. 108, Fig. 23:22 (north of Akko).

⁴² R. ROSENTHAL-HEGINBOTTOM, *Imported Hellenistic and Roman Pottery*, in: E. STERN *et al.*, *Excavations at*

3A. SEMI-FINE WARE: VERSION WITH CHALK LUMPS

The fabric, fired to the same colours like in the standard Semi-Fine version (light red, pink or yellow at break, pink to white or pinkish white at surface), contains, beside occasional tiny dark “dust” and some flat red grits, also large rounded white lumps (chalk?). This variant of the Semi-Fine Ware is attested at Tell Keisan by closed forms, all of them from Deposit A. They include fragments of large-sized vessels, like a rim of table amphora **44**, similar to a find from Tel Michal, Stratum VIII (430–400 B.C.)⁴³, as well as of small ones. The latter include a top of amphoriskos (?) with a pale red painted band on exterior rim (**45**),⁴⁴ and two fragmentary unguentaria. They pertain to the spindle-shaped group (**46**, in the fabric of which, besides lime lumps, pale grey grits are also conspicuous) and to the oval-bodied group with short stem (**47**)⁴⁵ respectively. One cannot exclude, however, that no. **47**, as well as some other similar fragments (such as **27–34**, **55–58**), traditionally attributed to unguentaria, could actually belong to juglets described at Tel Anafa as “Stumpy Foot Table Juglet” (see under no. **22** above). Finally, a miniature shallow bowl with incurved rim and flat base (**48**) appears to pertain to the same ware.⁴⁶

3B. SEMI-FINE WARE: SELF-SLIPPED VERSION (PLAIN OR OVERPAINTED WITH RED SLIP)

The fabric is fired to yellowish pink (7.5 YR 7/4), brownish pink (7.5 YR 6/4), pink (5 YR 7/6), or even light red (2.5 YR 6/8), sometimes with beige core (10 YR 7/3). It has some conspicuous voids and looks clean (possible inclusions are occasional red grits, rarely also white; some tiny black “dust”?). The surface has a smooth self-slip, thicker on the inside than outside, fired pale yellow (10 YR 8/4) sometimes with yellowish pink spots (7.5 YR 7/6). Parts of the vessel can be overpainted with thin (sometimes nearly “semi-transparent”) but well-adhering red. In this ware which regularly occurs with the Persian-period material at Tell Keisan⁴⁷ not only unguentaria, but also open vessels were made. The forms of the latter, indeed, clearly go back to the Persian period, so they probably occur as residual in the Hellenistic fills.

One of these open forms is a shallow bowl (perhaps used also as a lid?) with straight flaring wall and triangular rim; it occurred in Deposit A both in plain version (**49**) and with an orange-red band painted on exterior rim and fired unevenly, with brighter and

Dor, Final report IB, Jerusalem 1995 [= Dor], pp. 234–235, types 5A (Attic imports) and 6 (local imitations): Fig. 5.13:10, 5.14:1–2; MŁYNARCZYK, Sha'ar ha-Amakim, p. 234, Pl. 122: 4.

⁴³ Restored as a part of table amphora with horizontal handles: SINGER-AVITZ, Tel Michal, Fig. 9.7:4; the shape of rim recalls also Semi-Fine Angled Rim Table Amphora present at Tel Anafa by c. 125 B.C.: BERLIN, Anafa, pp. 38–39, PW 2, Pl. 1 (quoting several unpublished parallels from Israel).

⁴⁴ A similar form is known from Beth Zur in Judea, found in a layer assigned to the 2nd century B.C.: O.R. SELLERS *et al.*, The 1957 Excavations at Beth-Zur, Philadelphia 1968 [= Beth-Zur], p. 72, Fig. 23: 2.

⁴⁵ Mentioned as the “Phoenician Semi-Fine ware” by Berlin, Anafa, note 30.

⁴⁶ For a similar bowl from Tel Michal see note 21 above.

⁴⁷ It appears to be present also at Shiqmona: ELGAVISH, Shiqmona, 1976, p. 73.

darker spots (50); a decoration which occurs also with two other forms: 51 (fairly deep bowl with flaring wall and thickened inturned rim) and 52 (large bowl with beveled rim). The tradition of these forms apparently goes back to the end of the Iron Age at least, when they occur both at the Phoenician coast and in inland Syria.⁴⁸ Bowl 52 approaches also the form of 13 made in the Light White Ware (see above). Finally, a deep echinus bowl with incurved rim (53), the same shape as 11–12 in the Light White Ware and 23 in the Hard Orange Ware, has a close parallel in a Persian-period assemblage near Akko which also includes vessels comparable to 49–51.⁴⁹ The form exemplified by 49 occurs there in a Hellenistic-period assemblage as well.⁵⁰ A rim fragment of a large table jug (54) is adorned with a red band on exterior rim in the style recalling bowls 50–52.⁵¹

This primarily Persian-period ware, manufactured in the tradition of painted and burnished Phoenician vessels doubtlessly in the same workshops as the “standard” Phoenician Semi-Fine ware, continued for some time during the Hellenistic period in the form of unguentaria coated with a pale yellow self-slip. Our examples, 55⁵² and 56 (the latter with angular white grits, perhaps shell? conspicuous in the self-slip) fall into the category of vessels with small oval body, rather short stem and flaring foot.

4. LOCAL COLOUR-COATED WARE

The local/regional colour-coated ware actually comprises several fabrics (a–f) which probably correspond to a number of different pottery-making workshops.

LOCAL CC WARE (A)

The fabric is close to the Semi-Fine Ware, especially to its variant 3b. A firm red slip, applied by dipping to a carefully wet-smoothed surface (pale yellow or deep orange), happens to be fired evenly red, but more often it is mottled brown and/or orange (much like the band painted on bowl 50, see above). Sometimes it assumes insignificant gloss (due to slight polishing?); on exterior, it never reaches the base. The forms represented at Tell Keisan are unguentaria, plates and bowls.

Among the unguentaria, two basic variants of shape can be distinguished. One is that with a small oval body and rather short stem with flaring foot (see 27–34 above), here represented by 57 and 58. Another shape variant is the spindle-shaped unguentarium with

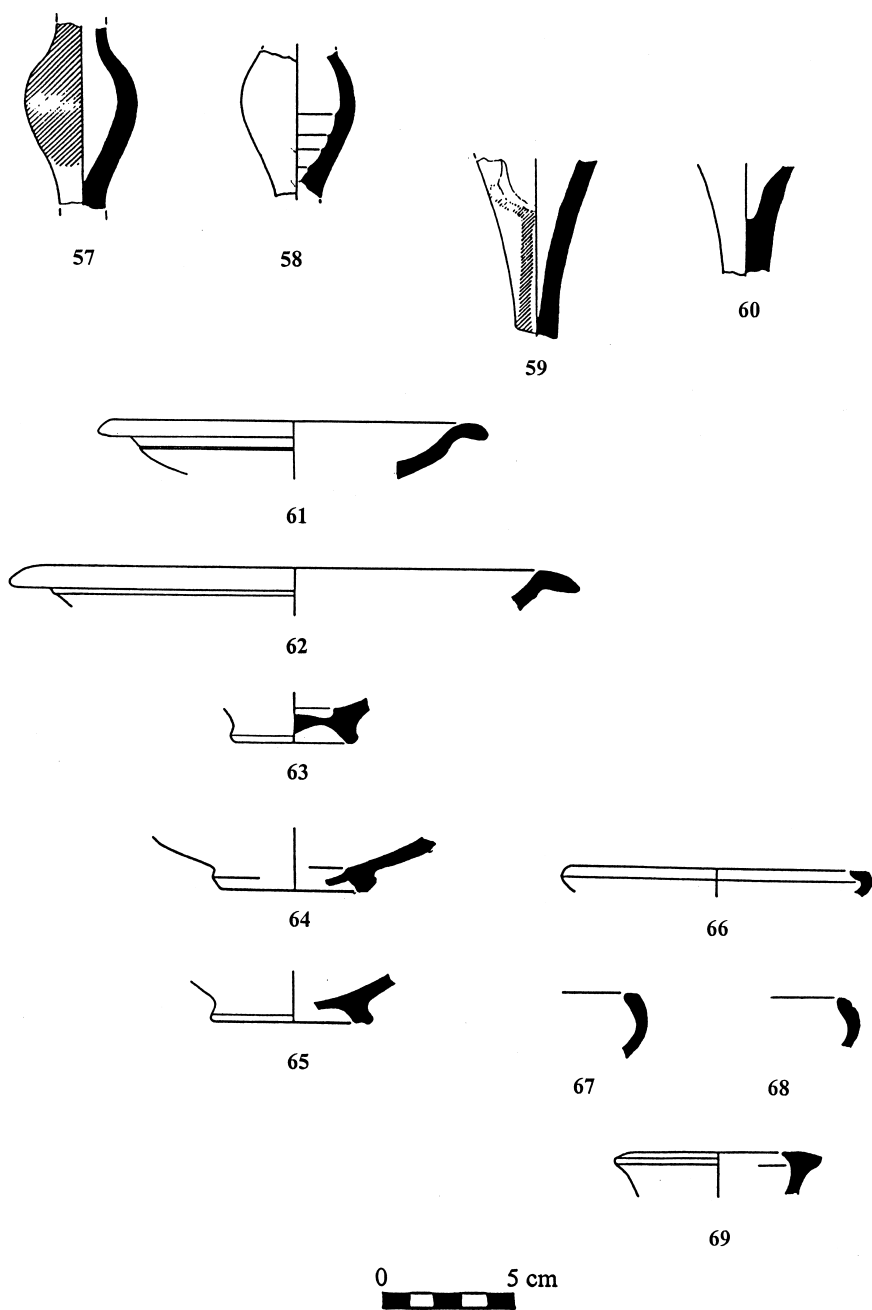
⁴⁸ Cf. J.-P. THALMANN, Tell ‘Arqa, Campagnes 1972–1974, *Syria* LV, 1978 [= Tell’Arqa], Fig. 46: 8–9 (Lebanon), and G. LEHMANN, Trends in the local pottery development of the Late Iron Age and Persian period in Syria and Lebanon, c. 700 to 300 B.C., *BASOR* 309, February 1998 [= Trends], Fig. 7: 2 and 5 (inland Syria, c. 600–580 B.C.). A Persian-period parallel to our 52 comes from Nahariya: OVADIAH, Nahariya, p. 23*, Fig. 2: 11.

⁴⁹ ROCHMAN-HALPERIN, Tell er-Ras, p. 102, Fig. 17:1–4.

⁵⁰ ROCHMAN-HALPERIN, *ibid.*, p. 108, Fig. 23:1.

⁵¹ For comparable profile and decoration, see jug rim in Cypriote White Painted VII ware from Kition: SALLES, KB II, No. 169.

⁵² Mentioned as the Phoenician Semi-Fine ware by BERLIN, Anafa, note 30.



6. Local Colour-Coated (a) Ware (Nos. 57–66); Colour-Coated (b) Ware (Nos. 67–69).

a long stem (see **35–38** above), here represented by **59** (whose fabric is “sandwiched”: fired grey inside and orange-pink outside)⁵³ and **60**.

The plates belong to a type with everted (extended?) rim, the wall either mildly convex on exterior (**61**)⁵⁴ or carinated below the rim (**62**, paralleled by the local colour-coated plates from Sha’ar ha-Amakim, antedating 150 B.C.).⁵⁵ This plate is deeply rooted in the Levantine tradition, to quote examples from the Syrian-Lebanese coast.⁵⁶ Bases **63–64** belong to fish plates of two different sizes (the profile of **63** is closely paralleled by **89** of the local Colour-Coated (c): see below). Bowl fragments include base **65**⁵⁷ and incurved rim **66**, the latter untypically flattened on the top.⁵⁸

LOCAL CC WARE (B)

This small group is a colour-coated counterpart of the plain Hard Orange Ware; its surface has coarse feel; the red slip is matt but well-adhering, applied only to some parts of the vessel, especially on the outside. The ware is represented by incurved rims of small shallow bowls **67** and **68** (the former’s shape recalling No. **66**), as well as by rim of jug **69**, a close parallel for its shape (different fabric) having been found at Dor in a 3rd century B.C. context.⁵⁹

LOCAL CC WARE (C)

The fabric, fired dark orange (5 YR 6/8) or orange-brown (7.5 YR 6/4), sometimes towards more yellow (7.5 YR 7/6), is very hard and granular in appearance, containing some minute white grits (and occasional eruptions to the surface). The inner surface has a slip fired red, mostly 2.5 YR 5/6, 2.5 YR 4/8, or 10 R 5/6, 5/8, 4/8. When thick, it may assume slight gloss, with some fine mica visible on the surface. On the outer surface the slip can be fired orange-brown, and it is often thin, merged with body, reaching down to about mid-height of the vessel. In better examples, however, the slip outside looks the same as inside, and reaches down nearly to base ring.

⁵³ Keisan I, Pl. 14:20a, considered by Berlin, Anafa, *loc. cit.*, as Phoenician Semi-Fine ware, along with Keisan I, Pl. 14:18, our No. **57**.

⁵⁴ Cf. an example from the Hellenistic stratum at Akko: DOTHAN, Akko, Fig. 30:2; for another Akko example, see LIEBERMAN-WANDER *et al.*, Graves (cf. note 5 above), p. 171, Fig. 4:2.

⁵⁵ E.g. MŁYNARCZYK, Sha’ar ha-Amakim, p. 229, Pl. 117:5.

⁵⁶ THALMANN, Tell’Arqa, Fig. 46: 12–15 and 18–20, of the Iron Age; Lehmann, Trends, Fig. 6 (Syrian-Lebanese coast, c. 700–580 B.C.), Nos. 7–8, 11, 13.

⁵⁷ At Tel Anafa, a comparable profile pertains to an Everted Rim Bowl: BERLIN, Anafa, p. 75, PW 141, Pl. 16.

⁵⁸ The profiles of Nos. **66** and **67** (below) recall a bowl from Tel Anafa: BERLIN, Anafa, PW 140, Pl. 16, in plain Semi-Fine ware. No. **66** could also be compared to “Hooked Rim Saucer-Lid” from Tel Anafa, which appears there only about 110 B.C.: *ibid.*, p. 82, PW 170, Pl. 19.

⁵⁹ GUZ-ZILBERSTEIN, Dor, Fig. 6.29:18. For the same rim profile, see also “Short Ledge Rim Unguentarium” of Tel Anafa, dated to 300–250 B.C.: BERLIN, Anafa, p. 63, PW 80–82, Pl. 12.

This ware is represented by a variety of forms. One of them is the echinus bowl, exemplified by No. 70, (preserving a complete profile with base ring and the wall carinated to form an upturned rim), as well as by incurved rims of three bowls from Deposit A, sharing the profile of 71⁶⁰, and by fragment No. 72, its form paralleled by local/regional colour-coated bowls from a pre-150 B.C. context at Sha'ar ha-Amakim.⁶¹ Two different profiles of ring base are illustrated by bowl fragments 73 and 74 (the latter comparable to No. 65, see above), while 75 pertains to a plate with extended and slightly down-turned rim.

Several fragments in this ware belong to a large and deep open form which can be described as a krater or *lekane*. Its upper part with ledge rim shows two kinds of profile. One of them (76) apparently belongs to a neckless krater (*lekane*) with parallels at Sha'ar ha-Amakim (a Cypriote? import, pre-150 B.C.) and on the coastal sites,⁶² while the other (77–78) – to a necked krater, either with horizontal handles, like “West Slope Ware” examples from Dor,⁶³ or with vertical handles, like some local kraters of Dor, possibly echoing earlier kraters in Cypriote Plain White Ware;⁶⁴ for another form of necked krater at Tell Keisan, see 21 above (Hard Orange Ware). Fragment of wall and horizontal handle (79) could belong together with 76,⁶⁵ to judge by the fabric and slip characteristics; rim 76 has not been completely fired, developing a pale grey core where thick. The slip in kraters 77–78 has a faint metallic sheen; in 77 it is red inside and on the rim, and brown outside, and it looks as if slightly vitrified. The same features of the slip are found in the rim and neck of table jug 80, the only closed form represented in this ware, and paralleled by a single find from Dor (a similar ware?).⁶⁶

⁶⁰ Two other rims are excavation Nos. 3.967 and K 357; rim of another echinus bowl in Local CC.c ware, No. 3.392a, its shape paralleled by Keisan I, Pl. 13:1c, also comes from Deposit A.

⁶¹ MŁYNARCZYK, Sha'ar ha-Amakim, p. 229, Pl. 117:12–14; similar bowl from Tel Michal (SINGER-AVITZ, Tel Michal, pp. 134–135, Fig. 9.12:1), was found in context with coins of Alexander the Great, hence dated to the 4th century B.C., which is certainly too early a date. Parallels come also from a 2nd century B.C. layer at Beth Zur: SELLERS, Beth Zur, Fig. 24:10–11.

⁶² MŁYNARCZYK, Sha'ar ha-Amakim, p. 230, note 35, Pl. 118:2 in WSW style, and a similar object from Dor: ROSENTHAL-HEGINBOTTOM, Dor, pp. 228–229, cat. No. 62, Fig. 5.11:6. The colour-coated parallels: GUZ-ZILBERSTEIN, Dor, p. 296, Fig. 6.12:1–5 (contexts of the 3rd and 2nd centuries B.C.); B. ZISSU and S. ROKEACH, A Hellenistic Columbarium at Ziqim, *Atiqot XXXVIII*, 1999, pp. 71–72, Fig. 5:13 (Ziqim: a site between Ashkelon and Gaza). For a possible Cypriote counterpart (predecessor?) in Plain White VII from Kition, see SALLES, KB II, pp. 75–78, Fig. 29, No. 258.

⁶³ ROSENTHAL-HEGINBOTTOM, Dor, Fig. 5.11:7–8.

⁶⁴ SALLES, KB II, pp. 78–80, Fig. 31, No. 262, from Kition; GUZ-ZILBERSTEIN, Dor, Fig. 6.14:10–11 (layers of the 2nd century B.C.?). For resemblance to one of the types from Tel Anafa (local Spatter Ware), see BERLIN, Anafa, PW 409, attributed to 125–75 B.C.

⁶⁵ Closely resembling deep krater from Dor: GUZ-ZILBERSTEIN, Dor, Fig. 6.12:4 (3rd century B.C.); for possible Persian-period prototypes, see STERN, Material Culture, pp. 99–100, Fig. 126, type 4, all the examples quoted by Stern, however, come from the southern Palestine.

⁶⁶ GUZ-ZILBERSTEIN, Dor, Fig. 6.29:17, attributed to the 2nd century B.C. stratum.

LOCAL CC WARE (D)

The fabric is dense, often fired with a yellow-beige core (10 YR 6/4) banded orange; only in **85** it is fired entirely light red (2.5 YR 6/6). It contains some fine lime (with eruptions to the surface), occasionally also red and grey grits. The surface is orange (near 5 YR 7/6), apparently wet-smoothed before applying the slip, which is evenly red, matt, not all encompassing on the exterior, and usually worn (**84** is an exception: here slip is thin but well-adhering). Identified examples of this ware belong to open forms. Specifically, fragments of bowls include incurved rims **81–82** and base ring of small bowl **83**, its size and profile comparable to **74** in Local Colour-Coated (c) ware. The wall profile of **81** could suggest that it stood on a flat base.⁶⁷ Shallow saucers or plates are of two different types, one of them with in-folded or rolled rim (**84**),⁶⁸ while another—with an extended rim (**85**).

LOCAL CC WARE (E)

The fabric, fired reddish yellow (7.5 YR 8/6), yellowish pink (7.5 YR 7/6) or pink (5 YR 7/4, 7/6), is granular, with white grits (occasionally large rounded ones) and brown grains, sometimes also grey and fine red inclusions. The slip is thin and matt, more or less worn, evenly red (10 R 5/8, 2.5 YR 6/8 and 5/6) or dark red (2.5 YR 4/8, 4/6, 4/4); No. **88** is exceptional in having an unevenly fired slip, 10 R 6/8 to 5/6.

This variant ware, which is well-attested at Sha'ar ha-Amakim, in Keisan is represented mostly by fragments of plates with extended rim, making up a consistent group in spite of minor differences. One rim variant has a pronounced inner edge **86–87**, in the latter equipped with a groove.⁶⁹ Rims of **88** and **89** lack this feature and have gently curved tops (like **61** in Local Colour-Coated (a), see above). As the full profile of **89** (its fabric untypically fired to light red: 2.5 YR 6/6) demonstrates, this is a Levantine version of the Hellenistic plate. It combines elements of the Greek fish plate type with local tradition of shallow bowls with extended rim and often carinated body, the tradition going back, through the Persian period, to the Iron Age.⁷⁰ The same kind of rim is associated with an undulate profile of flaring wall in fragment **90**; here again, a parallel from Tel Michal reveals it as a shallow fish plate standing on ring base.⁷¹

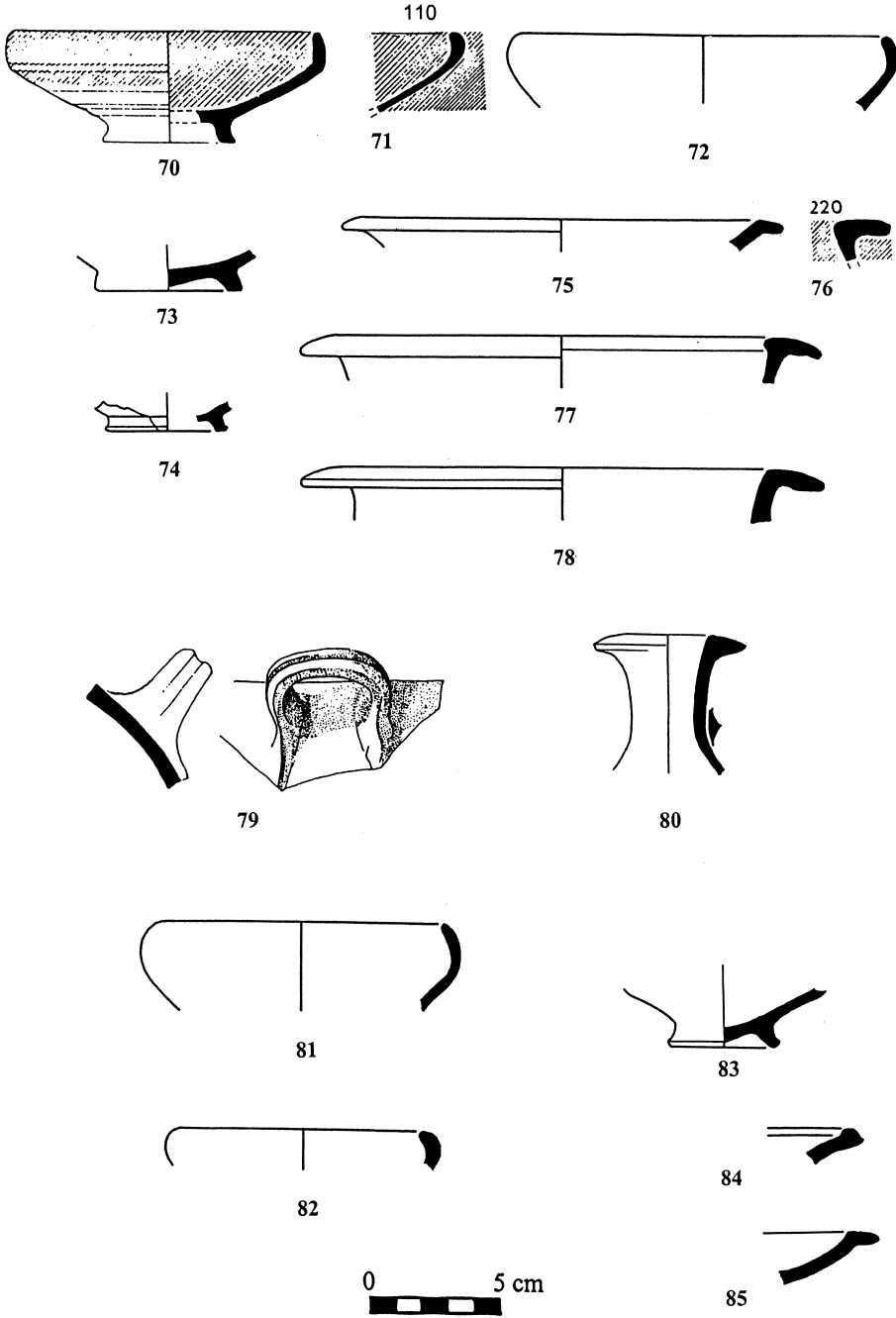
⁶⁷ Like a plain-ware bowl from Tel Michal Stratum VI, dated to c. 350–300 B.C.: SINGER-AVITZ, Tel Michal, Fig. 9.10:8; for similar profiles see also SELLERS, Beth-Zur, Fig. 24:10–11 (2nd century B.C.).

⁶⁸ A close (but fragmentary) parallel comes from Akko: LIEBERMAN-WANDER *et al.*, Graves, p. 171, Fig. 4:1; similar fragmentary plate from a Cypriote(?) source at Sha'ar ha-Amakim (antedating 150 B.C.): MŁYNARCZYK, Sha'ar ha-Amakim, p. 230, note 29, Pl. 117:6; one cannot agree with N. Lapp's opinion that this form of plate is derived from the "fish plates": LAPP, Tell el Ful, p. 104, Fig. 77:19–22 (plain-ware examples dated to the 2nd century B.C.); see also example with a string-cut base: ELGAVISH, Shiqmona, 1976, Fig. 3:6.

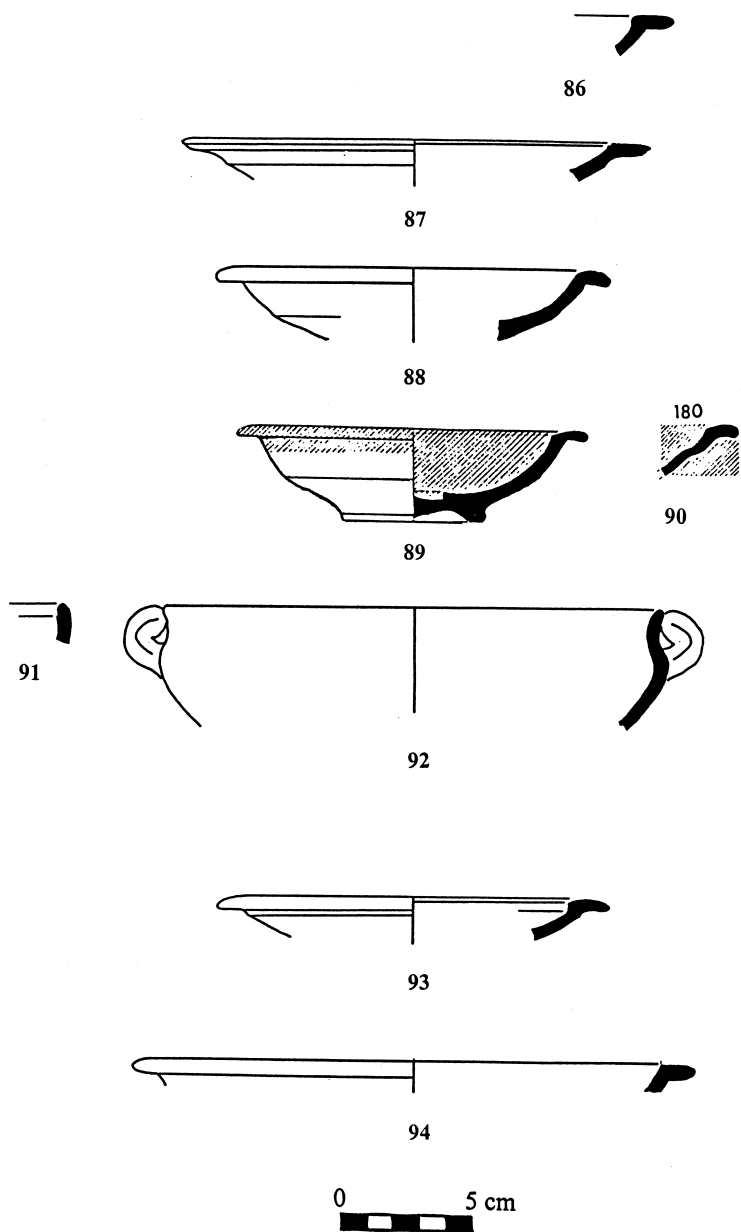
⁶⁹ This feature occurs in a very large shallow bowl from Akko styled as mortarium: DOTHAN, Akko, pp. 28–29, Fig. 27:8 (local coarse ware, from the 5th century B.C. stratum).

⁷⁰ E.g. OVADIAH, Nahariya, p. 23*, Fig. 2:9 (Persian period); the continuity of tradition between the Iron Age and Hellenistic assemblages is clearly visible at Tell Arqa: THALMANN, Tell'Arqa, Fig. 46:11–15 and 18–20, and Fig. 43:11–18 respectively.

⁷¹ SINGER-AVITZ, Tel Michal, Fig. 9.10:7 in plain ware (Stratum VI: 350–300 B.C.).



7. Local Colour-Coated (c) Ware (Nos. 70-80); Colour-Coated (d) Ware (Nos. 81-85).



8. Local Colour-Coated (e) Ware (Nos. 86–92); Colour-Coated (f) Ware (Nos. 93–94).

Other open forms are represented by a rim fragment **91** with a slight indentation inside, probably of a echinus bowl, and by a rim and body fragment **92**. The latter pertains to a form well-known in the Eastern Mediterranean, that of a skyphos with pinched handles. This is an excellent example of a local imitation of the type, which originated in the south-western Asia Minor and/or Rhodes in the early 3rd (?) century B.C. to be commonly imported to the Levantine coast from the early 2nd century B.C. on.⁷²

LOCAL CC WARE (F)

The fabric, rather pale-coloured: pale beige (10 YR 7/3), yellowish pink (7.5 YR 7/4) or pink (5 YR 7/6), is light, usually with some conspicuous voids and fine white grits (sometimes also brown/red and dark grey ones), and it has a slightly powdery feel. The slip, matt and more or less worn, is fired in differing hues of red inside and out; in our examples, it is deep red inside (10 R 5/6) and dark red outside (10 R 4/2 to 3/2). This ware, probably a colour-coated counterpart of our Light White Ware,⁷³ is represented by two open forms at Tell Keisan. Plate **93**, a small shallow saucer with extended rim (resembling **86** above), is paralleled by a local plate from the Sha'ar ha-Amakim context antedating 150 B.C.⁷⁴ Another form is a fairly large plate (or bowl?) with short projecting rim (**94**), comparable to **75** above.

CONCLUSIONS

By local and regional wares one should understand, as far as Tell Keisan is concerned, the pottery manufactured at Phoenician sites situated on the coast between Shiqmona in the south through Akko and Nahariya up north to Tyre, as well as in the plain of Akko along with the sites bordering its area, like Sha'ar ha-Amakim to the south-east. The examination of these wares demonstrates they were a direct continuation of the Persian-period ceramic production, while the repertoire of forms occurring with each of them adds some interesting information.

The source for the Light White Ware (presumably the same as Phoenician White Ware of Tel Anafa) was in the coastal area, apparently not far from Tell Keisan (the coast of the Akko bay?) as indicated by a large number of forms present at the site. Virtually all of them are rooted in the Persian-period tradition, probably with some influence from the Attic table pottery. The chronology of parallels to our Keisan examples suggests that the Light White Ware hardly survived into the Hellenistic period. The Hard Orange Ware in

⁷² For an equally crudely shaped local product of Tel Anafa see BERLIN, *Anafa*, PW 149 (Pl. 17), from a stratum dated to 332–125 B.C., with a list of parallels. Examples of importations at Sha'ar ha-Amakim: MŁYNARCZYK, *Sha'ar ha-Amakim*, p. 231, notes 40–41, Pl. 118:3–5; at Tell Keisan: EAD., paper in print (note 3 above).

⁷³ This variant ware seems to be recognizable also at Shiqmona: ELGAVISH, *Shiqmona*, 1976, pp. 71, 73.

⁷⁴ MŁYNARCZYK, *Sha'ar ha-Amakim*, p. 229, Pl. 117:2.

its turn appears to be a Galilean counterpart of the Phoenician Semi-Fine Ware and to come from a manufacturing centre(s) situated more inland, on the alluvial soils of the Akko plain. At Keisan, where it is represented by relatively few examples, it appeared later and occurred throughout the Hellenistic period.

As for the “standard” Phoenician Semi-Fine Ware which comes from a source on the Lebanese coast (Tyre? Sarepta?), it is represented at Tell Keisan by closed forms exclusively. Some of them were brought there probably for their contents (unguentaria), and others for their specific form, like juglet and lamps, the latter apparently competing with Greek imports. An origin in the Phoenician area is strongly suggested also for two other varieties of the Semi-Fine Ware present at Keisan, one of them with distinctive chalk lumps in the fabric, and the other one self-slipped and/or painted. The repertoire of the latter includes regional Persian-period forms with a long tradition. The presence of six variants of the Hellenistic Colour-Coated Ware (a–f), distinguished on the criterion of fabric, does confirm the existence of a number of pottery making centres, apparently corresponding to those of the plain wares. Similar conclusion can be reached on examining the published materials from the Persian– and Hellenistic-period strata from Shiqmona.⁷⁵

Several aspects of the local Colour-Coated Ware in the Hellenistic period are expressions of an older Levantine pottery tradition, common to the Syro-Palestinian coast and to Cyprus. These are: an early use of the red slip (sometimes with traces of polishing) without a slightest attempt to imitate the Greek black gloss; intentional applying of the slip only to chosen parts of the vessel; and regional preferences regarding the forms as proven by the specific profile of local fish plates. To sum up: it is obvious that the very location of Tell Keisan in close proximity to the regional urban centre of Ptolemais certainly enhanced the possibilities of our site to receive pottery products from different regional workshops as well as foreign imported goods.

APPENDIX 1: concordance of illustrations with register numbers and references to Keisan I

“Light White Ware”:

1. The common type of Hellenistic jar from Tell Keisan (Keisan I, Pl. 8:4), paralleled by a rim (3.05.04, no register number) from Deposit A
2. 1.478 rim of jar, Deposit A (Keisan I, Pl. 8:1h)
3. 1.505 rim of jar, Deposit B (Keisan I, Pl. 10:2)
4. 1.509 rim of big jug (Keisan I, Pl. 10:6)
5. 3.895 rim of jug, Deposit A (Keisan I, Pl. 10:10)
6. 1.508 rim of krater, Deposit A (Keisan I, Pl. 10:4)
7. 1.499, rim of krater (Keisan I, Pl. 12:5)
8. 3.234 rim of basin, Deposit A (Keisan I, Pl. 12:8)

⁷⁵ ELGAVISH, Shiqmona, 1968; ID., Shiqmona, 1976.

- 9. 3.349 small bowl, Deposit A (Keisan I, Pl. 13:34)
- 10. 3.445 miniature bowl (Keisan I, Pl. 14:12)
- 11. 3.044 incurved rim of bowl, Deposit A (Keisan I, Pl. 13:33)
- 12. 3.944 incurved rim of bowl, Deposit A
- 13. 3.039 incurved rim of bowl, beveled exterior, Deposit A (Keisan I, Pl. 13:30)
- 14. 3.896 fragment of bowl with folded rim, Deposit A (Keisan I, Pl. 13:32)
- 15. 3.897 fragment of bowl with folded rim, Deposit A (Keisan I, Pl. 13:32a)
- 16. 3.945, fragment of rim of bowl, Deposit A
- 17. 3.274 fragment of saucer, Deposit A (Keisan I, Pl. 10:22, described as lid)
- 18. 7.489 fragment of juglet or small bottle

“Hard Orange Ware”:

- 19. 3.832a (K 225.33) rim of jar, Deposit C (Keisan I, Pl. 7:6a)
- 20. 3.833d (K 225.55) rim of jar, Deposit C (Keisan I, Pl. 8:1d)
- 21. 3.748 fragmentary rim and neck of krater, Deposit A (Keisan I, Pl. 12:4)
- 22. 5.062 lower part of lekythos (Keisan I, Pl. 14:25)
- 23. 3.044a (K 225.28) fragment of echinus bowl (Keisan I, Pl. 13:33a)

“Phoenician Semi-Fine Ware” (standard):

- 24. 1.192 complete ointment pot (?) (Keisan I, Pl. 14:28)
- 25. 3.550 complete juglet, Deposit A (Keisan I, Pl. 14:27)
- 26. 1.519 top fragment of amphoriskos, Deposit B (Keisan I, Pl. 10:19)
- 27. 1.320 fragment of unguentarium (Keisan I, Pl. 14:17)
- 28. 3.509 foot of unguentarium, Deposit A (Keisan I, Pl. 14:17a)
- 29. 3.270 fragment of unguentarium, Deposit A (Keisan I, Pl. 14:17b)
- 30. 3.545 fragment of unguentarium, Deposit A (Keisan I, Pl. 14:17c)
- 31. 3.876 fragment of unguentarium, Deposit A (Keisan I, Pl. 14:17d)
- 32. 3.05.50 (no register number) fragment of unguentarium, Deposit A (Keisan I, Pl. 14:19b)
- 33. 4.245 fragment of unguentarium, Deposit A (Keisan I, Pl. 14:19)
- 34. 3.05.50 (no register number) fragmentary body of unguentarium, Deposit A (Keisan I, Pl. 14:19a)
- 35. ? 3.261 large part of unguentarium, Deposit A (Keisan I, pl 14:16)
- 36. 5.559 fragment (stem) of unguentarium (Keisan I, Pl. 14:22)
- 37. 3.189 fragment of unguentarium, Deposit A (Keisan I, Pl. 14:20)
- 38. 7.454 lower part of unguentarium, Deposit K
- 39. 7.488 lower part of bottle or amphoriskos?
- 40. 3.510 lamp, Deposit A (Keisan I, Pl. 14:1)
- 41. 3.511 lamp, Deposit A (Keisan I, Pl. 14:2)
- 42. 3.470 lamp, Deposit A (Keisan I, Pl. 14:3)
- 43. 3.546 fragment of body of lamp, Deposit A

“Semi-Fine Ware with chalk lumps”:

- 44. 1.507 fragmentary rim of table amphora(?) Deposit A (Keisan I, Pl. 10:3)
- 45. 1.517 upper part of amphoriskos(?), Deposit A (Keisan I, Pl. 10:21)
- 46. 7.461 lower part of unguentarium, Deposit K
- 47. 3.877 lower part of juglet or unguentarium, Deposit A (Keisan I, Pl. 14:21)
- 48. 3.294 miniature bowl, Deposit A (Keisan I, Pl. 14:11)

“Semi-Fine Ware: self-slipped version” (plain or overpainted with red slip):

- 49. 3.888 fragmentary rim of bowl, Deposit A (Keisan I, Pl. 13:35)
- 50. 3.946 rim of bowl with an orange-red band painted on exterior, Deposit A
- 51. 7.395 fragment of bowl rim with a red band painted on exterior, Deposit F
- 52. 7.401 fragment of bowl rim with a red band painted on exterior, Deposit F
- 53. 3.040 rim of echinus bowl, Deposit A (Keisan I, Pl. 13:31)
- 54. 7.397 rim of large table jug? red band painted on lip, Deposit F
- 55. 1.020 fragment of unguentarium (Keisan I, Pl. 14:18a)
- 56. 7.419 stem and foot of unguentarium, Deposit F/G

Local Colour-Coated Ware (a):

- 57. 1.284 body of unguentarium (Keisan I, Pl. 14:18)
- 58. 7.425 body of unguentarium, Deposit D
- 59. 3.190 fragment of unguentarium, Deposit A (Keisan I, Pl. 14:20a); “sandwiched” fabric (fired grey inside, orange-pink outside) with matt red slip running down from the upper body
- 60. 7.487 fragment of unguentarium: surface treatment as 58
- 61. K 14 fragmentary rim of small plate
- 62. 5.592 fragment of rim of plate, Deposit D
- 63. 5.594 base of fish-plate, Deposit D
- 64. K 25.3 fragment of ring base
- 65. 5.596 fragmentary base of small bowl, Deposit D
- 66. 7.389 small fragment of rim of bowl, Deposit E

Local Colour-Coated Ware (b):

- 67. 7.427 fragmentary rim of bowl, Deposit F-G
- 68. 7.471 fragmentary rim of bowl
- 69. 7.448 rim of jug (lagynos type), Deposit H

Local Colour-Coated Ware (c):

- 70. 3.770 echinus bowl, Deposit A (Keisan I, Pl. 13:6)
- 71. 3.416 fragment of rim of echinus bowl, Deposit A (Keisan I, Pl. 13:1k)
- 72. 7.376 fragment of echinus bowl
- 73. 5.598 fragment of ring base of bowl
- 74. 7.406 fragment of ring base of small bowl, Deposit F

- 75. 7.391 rim fragment of saucer, Deposit E
- 76. 3.456 rim of *lekane* ("krater"), Deposit A (Keisan I, Pl. 13:17)
- 77. 3.969 rim of krater, Deposit A
- 78. 3.968 rim of krater, Deposit A
- 79. 3.900 fragment of wall and horizontal handle of krater or *lekane*(?), Deposit A (Keisan I, Pl. 10:9)
- 80. 3.423 rim and neck of lagynos, Deposit A (Keisan I, Pl. 14:14)

Local Colour-Coated Ware (d):

- 81. 5.593 fragment of incurved rim of bowl, Deposit D
- 82. 7.399 fragment of incurved rim of bowl, Deposit F
- 83. K 59.3 base ring of small bowl
- 84. 7.378 fragmentary rim of plate/saucer
- 85. K 60.42 rim of small shallow plate

Local Colour-Coated Ware (e):

- 86. K 23.39 fragmentary rim of plate
- 87. 7.400 fragmentary rim of plate, Deposit F
- 88. K 426 (+ K 340.14) fragment of plate
- 89. 1.302 fragmentary plate (publ. Keisan I, Pl. 13:12)
- 90. 3.471 fragmentary rim of plate, Deposit A (publ. Keisan I, Pl. 13:12b)
- 91. 7.390 fragmentary rim of bowl, Deposit E
- 92. K 400.5 (or 400.2 ?), fragment of rim of skyphos with pinched handles

Local Colour-Coated Ware (f):

- 93. 7.484 fragmentary rim of plate
- 94. 7.485 fragmentary rim of plate

APPENDIX 2: Distribution of local wares, discussed in this paper, in Hellenistic deposits at Keisan

- Deposit A: *Fosse* 2003–Nos. 1–2, 5–6, 8–9, 11–17, 21, 23, 28–35, 37, 40–45, 47–50, 53, 59, 70–71, 76–80, 90
- Deposit B: *Fosse* 1023–Nos. 3, 26
- Deposit C: *Fosse* 1024–Nos. 19, 20
- Deposit D: *opérations* 5.14.01 + 02–Nos. 58, 62–63, 65, 81
- Deposit E: *Fosse* 7.1624–Nos. 66, 75, 91
- Deposit F: *Fosse* 7.1643–Nos. 51–52, 54, 74, 82, 87
- Deposit F/G: *opération* 7.16.50–Nos. 56, 67
- Deposit H: over Hellenistic floor (*opérations* 7.18.29 + 32)–No. 69
- Deposit K: *Fosse* 7.1830–Nos. 38, 46